

 <div>Persimmon</div>	Health, Safety & Environment Department	Issue Ref:	HS021
		Issued:	BG
		Revision:	1
Safety Alert			

Topic:	Tipping Skips
---------------	----------------------

Issued By:	Barry Gorman	Issue Date:	14/10/2024
------------	--------------	-------------	------------

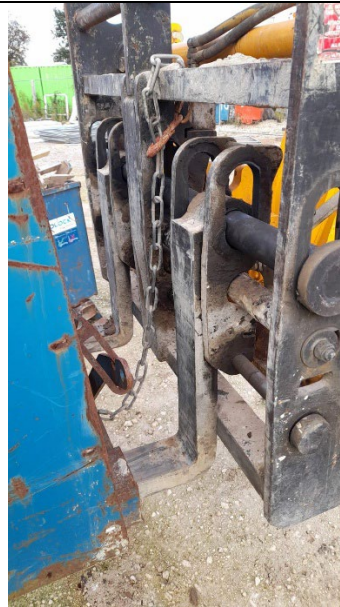
Distribution	X	Commercial		Finance	x	Administration/MD
		Technical		Sales		Land
	x	Construction		Customer Care	x	PLC – HS&E Advisors

Description
<p>An accident has happened with a manual operated (handle/ lever style) tipping skip. Bricklayers were emptying mortar tubs into it when one tub fell off the back and hit the skip's release handle. This caused the skip to tip forward and release the contents of the skip onto a workers leg, causing significant injury.</p>

Action Required
<p>When using tipping skips the site management team and telehandler operator must make sure:</p> <ul style="list-style-type: none"> The skip has a current certificate from HSB. Site management must show all lifting equipment, including tipping skips, to the HSB Engineer during their six-month inspections. The telehandler operator checks the skips weekly and notes this on their checklist. Any problems should be actioned by the site management. A copy of the tipping skip user handbook is on site and the telehandler operator has read and understood it. For manually operated tipping skips: <ul style="list-style-type: none"> ➤ It is ESSENTIAL to check that the safety catch/ring is engaged at ALL times whilst the skip is in use. ➤ Skips MUST NOT be overloaded. ➤ The telehandler operator MUST attach the safety chains around the forks and back to the skip. If the safety chain is missing, DO NOT use the skip. ONLY auto-locking tipping skips should be purchased or hired with immediate effect.



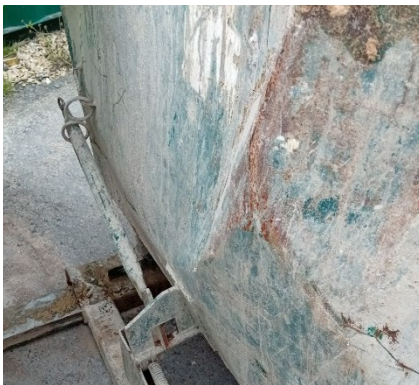
Manual operated skip



Manual operated skip, showing chain around the forks



Manual operated skip, showing safety catch



Manual operated skip, showing safety rings



Auto-locking skip, no catch/ rings or chains needed